

Together for the future of energy

COMPANY PROFILE



# Together for the future of energy

Corinth Pipeworks is a leading global manufacturer of welded steel pipes and hollow sections for the energy and construction sectors.

With a legacy of technological excellence and a vision for a sustainable future, we deliver innovative solutions that support the safe and efficient transport of energy, from hydrocarbons to hydrogen and carbon capture and storage projects.

**50+**  
years of  
experience

**55+**  
countries  
served

**>1,000**  
employees

**>900 km**  
Hydrogen-certified  
pipe solutions

**>200 km**  
pipelines for  
CCS projects

Integrated  
port  
and logistics  
facilities

# Our mission, vision & values



## Mission:

We continuously advance our capabilities and expertise, delivering value with responsibility, effectiveness, and passion, to all our stakeholders.



## Vision:

Forge a dynamic path in the energy transmission infrastructure by offering innovative solutions to global challenges, striving towards a sustainable future for all.



## Values:

- Passion for Excellence
- Standing Together
- Sustainable Growth
- Integrity & Accountability
- Safety



Advanced manufacturing & inspection technologies



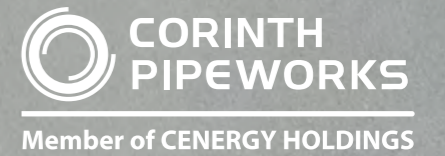
Extensive offshore & onshore experience



Strong track record in hydrogen transportation projects



Customer-focused approach and tailor-made solutions



# Trusted partner

## Proven expertise Future-ready solutions

At Corinth Pipeworks, we combine manufacturing precision, engineering know-how, and global project experience to deliver solutions that stand the test of time.

From design to delivery, our approach ensures quality, safety, and sustainability in every project we undertake.



Automated inspection systems and quality assurance labs



Integrated port of exclusive use for direct loading and export

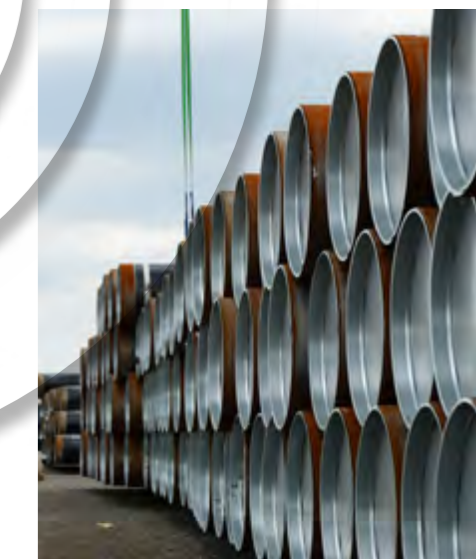
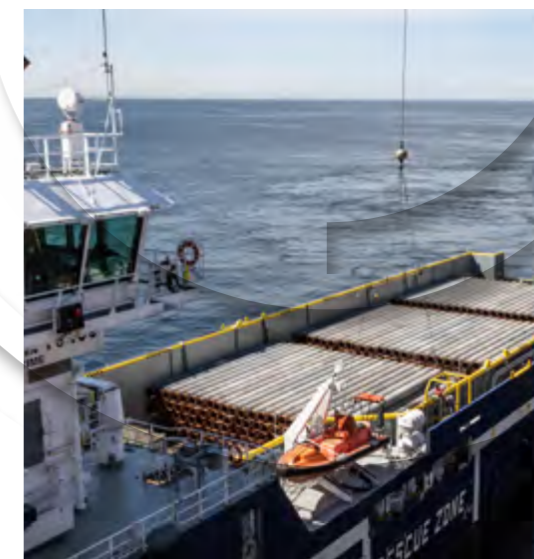
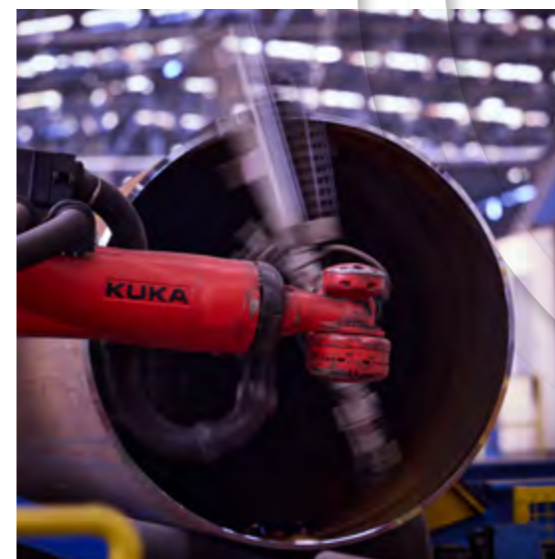
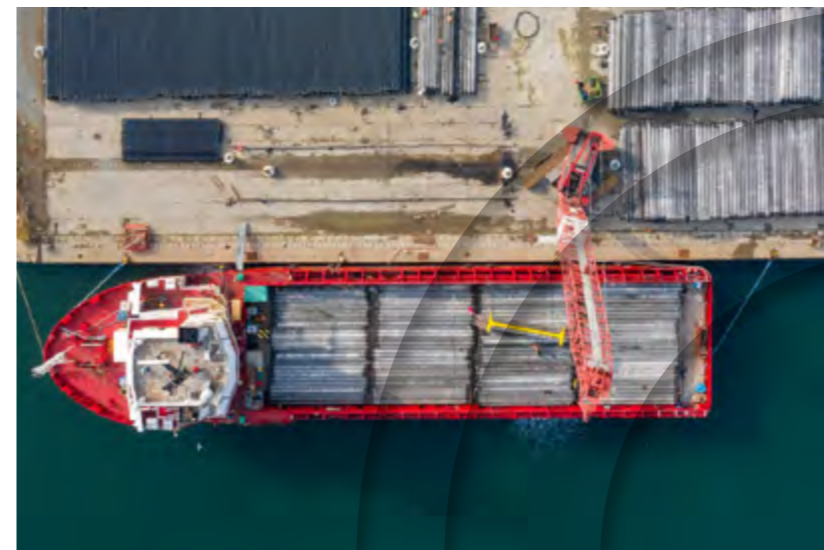


Certified under API, ISO, and DNV standards



In-house welding and non-destructive testing expertise

# Our competitive advantage



## Enhanced capacity for large scale projects

With an extensive production capacity of more than 1.5million tons and 5 pipe mills in its production plants in Greece, Thisvi and UK, Hartlepool, Corinth Pipe-works presents a solid solution for the coverage of large scale energy projects worldwide. Supplementary downstream operations including anti-corrosion internal and external coating, CWC, laboratories, double jointing facility and many more services, cover the needs of even the most complex projects

## Ultra-long lengths & tight tolerances

We are among the few global manufacturers offering ERW/HFI pipes and SAWL/SAWH pipes up to 24.4m, with full coating and lining capabilities. Our modern mills ensure exceptionally tight dimensional tolerances on key parameters such as out-of-roundness, wall thickness, and pipe straightness, meeting the most demanding client specifications.

## Own port & storage

We have access to a dedicated port located just 1.5 km from our Thisvi plant, ensuring efficient import of raw materials and export of finished products with minimal delays. The port is well-organized and fully equipped with essential handling infrastructure, supporting safe and reliable operations. In addition, the Company offers flexible storage solutions for finished and semi-finished products, both at its Thisvi facility in Greece and at client-designated locations.

## Hydrogen lab

We are at the forefront of the energy transition, providing solutions for the European Hydrogen Backbone and meeting blended hydrogen under high pressure (up to 207bar) and static loads, fully compliant with ASME B31.12. Our facility in Thisvi supports qualification and R&D testing, with planned upgrades to expand fracture toughness and fatigue resistance evaluations.

## Concrete weight coating (CWC) plant

Corinth Pipeworks provides concrete weight coating solutions for offshore applications in its production facility in Thisvi, Greece. Corinth Pipeworks offers all pipe manufacturing and pipe coating operations required to supply a complete offshore pipeline package.

## Offshore: Set up for success

We combine advanced SAWL and HFI pipe manufacturing, real-time forming control, precise geometrical quality, and cutting-edge testing with decades of experience and strong partnerships with top steel producers. Our Thisvi facility offers full services, including coatings and test laboratories, for demanding offshore projects. The Hartlepool LSAW facility in the UK, established in 1926, adds nearly a century of expertise and expands our capacity for high-performance pipes, strengthening our position as a leading supplier for deep offshore applications worldwide.

## Project management & multimodal delivery to site

We have extensive experience delivering pipes safely and efficiently by sea, rail, and road to customer sites worldwide. Operating in over 55 countries, often under challenging conditions, our Company manages multi-modal transport, regulatory compliance, and documentation, supported by detailed logistics plans that ensure the secure and timely delivery of all project items.

# Global presence & Operations



Corinth Pipeworks S.A.  
Thisvi, **Greece**



Corinth Pipeworks UK, Ltd.  
Hartlepool, **UK**



**SAWL**  
800,000  
per year

- **Grade:** up to X80 (X100 in the future)
- **Outside Diameter:** 16"-56"
- **Wall Thickness:** up to 51mm
- **Pipe Length:** up to 24.4m (with Double Jointing)

**SAWH**  
375,000  
per year

- **Grade:** up to X80
- **Outside Diameter:** 24"-100"
- **Wall Thickness:** up to 25.4mm
- **Pipe Length:** up to 24.4m (with Double Jointing)

**ERW/HFI**  
400,000  
per year

- **Grade:** up to X80
- **Outside Diameter:** 8<sup>5</sup>/<sub>8</sub>"-26"
- **Wall Thickness:** up to 25.4 mm
- **Pipe Length:** up to 24m (80')

**ERW/HFI**  
150,000  
per year

- **Grade:** up to S355J2H
- **Outside Diameter:** 2"-7<sup>5</sup>/<sub>8</sub>"
- **Wall Thickness:** 2.0-10.0mm

**Coating**

- TCP 100** • Pipe Diameter: 85/8"-100"  
• Max pipe length: 24m
- TCP 48** • Pipe Diameter: 41/2"-48"  
• Max pipe length: 18.3m

7,000,000 m<sup>2</sup>  
per year

**Lining**

- TLP 56** • Pipe Diameter: 85/8"-56"  
• Max pipe length: 24m

2,000,000 m<sup>2</sup>  
per year

**CWC**

- **Outside pipe diameter:** 85/8"-40"
- **Max pipe length:** 13m
- **Concrete thickness:** 40-150mm

**Connectors**  
5,000  
/shift/year

- **Connector Grade:** up to X100 (pipe grade : up to X80)
- **Joint length range:** 3-18m

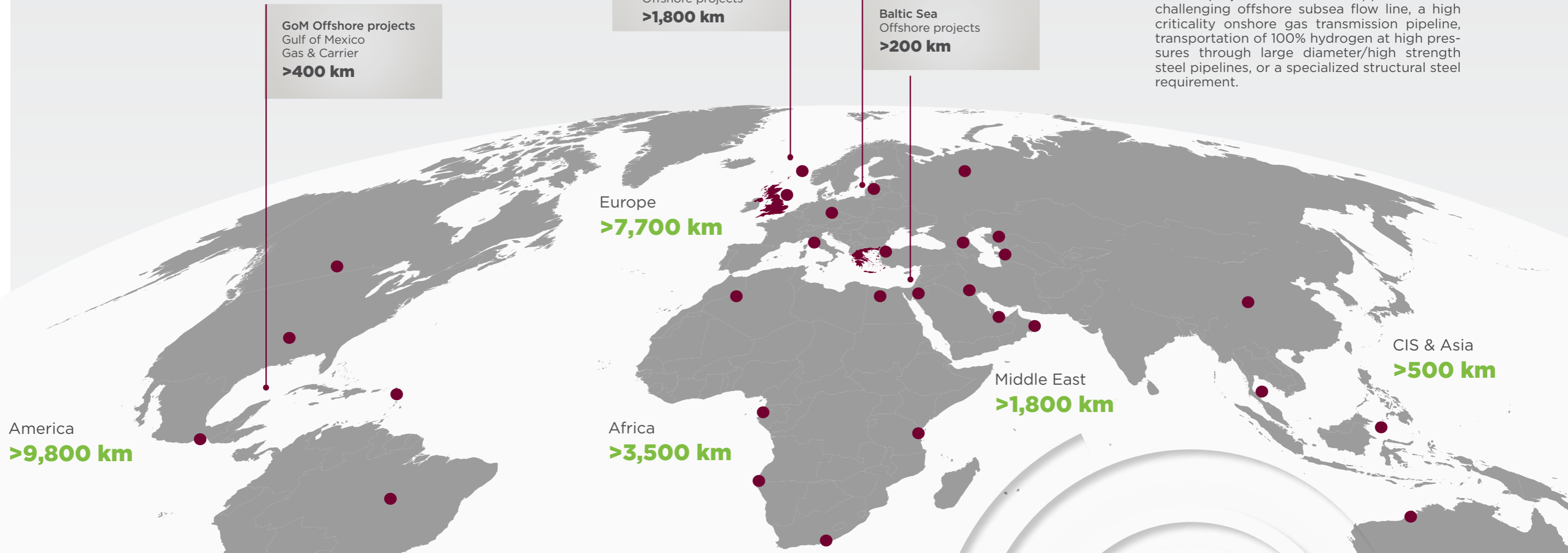
**Port facilities (exclusive use)**



# Global presence

Corinth Pipeworks is a global leader in steel pipeline solutions for the energy and construction markets.

Decades of experience provide an in-depth understanding of what our clients expect. The Companies' ability to add value to a client's project whether the application is a challenging offshore subsea flow line, a high criticality onshore gas transmission pipeline, transportation of 100% hydrogen at high pressures through large diameter/high strength steel pipelines, or a specialized structural steel requirement.



## Our customers

- 2002-2025
- 2006-2025

- |   |                                |                      |                                |                          |
|---|--------------------------------|----------------------|--------------------------------|--------------------------|
| - Aker BP                                 | - DESFA                        | - Interpipe          | - Petrobras                    | - Sinopec                |
| - Allied International                    | - DNOW                         | - Itochu             | - Petrofac                     | - Snam                   |
| - Allseas                                 | - EDF                          | - Jemena             | - Petronas                     | - Spectra Energy         |
| - Anglo American                          | - Edgen Murray                 | - McDermott          | - PDO                          | - Spartan                |
| - Baltic Connector                        | - Enbridge                     | - MRC Global         | - Plains All American Pipeline | - STEG                   |
| - Black Sea Oil & Gas                     | - Energean                     | - NaTran             | - Porthos                      | - Subsea 7               |
| - BP                                      | - Energy Transfer              | - National Grid      | - QatarEnergy                  | - Sumitomo Corporation   |
| - Cadent Gas                              | - Eni                          | - NET4GAS            | - RWE                          | - TechnipFMC             |
| - Cheniere Energy                         | - Enterprise Products Partners | - Northumbrian Water | - Saudi Aramco                 | - Teréga                 |
| - Chevron                                 | - Equinor                      | - OGC                | - Sasol                        | - TotalEnergies          |
| - Compañía Minera Doña Inés de Collahuasi | - ExxonMobil                   | - OGE                | - Scotia Gas Networks          | - Van Leeuwen            |
| - ConocoPhillips                          | - Gas Networks Ireland         | - OMV Petrom         | - Shell                        | - Wales & West Utilities |
| - DCP Midstream                           | - GASCO                        | - Ove Arup           | - SGI                          | - Williams Companies     |
| - Denbury                                 | - GAZ-SYSTEM                   | - Perenco            |                                | - Wintershall Dea        |
|   |                                | - Petrobel (Eni JV)  |                                | - Woodside Energy        |

# Low carbon energy transportation solutions



## CCS Carbon Capture Storage



**Porthos:** Europe's first HFW CCS project ever, delivered.



Country: **The Netherlands**



**Northern Endurance Partnership (NEP):** The world's largest CCS project.



Country: **UK**



**HyNet North-West CCS:** Decarbonization journey continues.

Country: **UK**



## Hydrogen certified pipes



They are the first, newly manufactured, pipes certified to transport up to 100% hydrogen for a high-pressure transmission gas pipeline in Europe.

Country: **Italia**



High-pressure gas pipeline from Gustorzyn to Wronow.

Country: **Poland**



Offshore gas production project that will run entirely on renewable energy

Country: **The Netherlands**



West Macedonia pipeline is part of the European Hydrogen Backbone, Europe's hydrogen infrastructure needed to achieve its climate and energy objectives.

Country: **Greece (West Macedonia)**



Jemena has selected to utilize Corinth's solution of high-grade steel pipes for the future transmission of up to 100% hydrogen.

Country: **Australia**

“Our people tailor our wide range of services to meet your requirements handle any circumstances and deliver on time.”

“You can find our products and satisfied customers all over the world.”

## Onshore pipelines and demanding applications

### Onshore pipelines

We offer all sizes and grades of pipe used for onshore gas and oil pipelines, downstream CO<sub>2</sub> reinjection, petrochemical and fuel transportation lines.

Our pipes are in compliance with all major international standards used for onshore applications such as API 5L, ISO 3183 and CSA Z245.1, supplemented where necessary by additional client specification requirements.

Pipes can also be supplied with external anti-corrosion coatings and internal linings such as FBE single and dual layer, three layer PE/PP and internal epoxy lining for flow efficiency and/or anticorrosion protection. Pipe length can reach 24m and give significant cost benefit in the final laying phase.

### Hydrogen

We are actively contributing to the energy transition and the achievement of net-zero carbon emissions through the development of advanced hydrogen transportation solutions. We are at the forefront of innovation, developing pipeline systems capable of safely transporting hydrogen through both new and existing networks, and is among the first to offer high-pressure pipelines certified for up to 100% hydrogen in line with ASME B31.12 “Option B” requirements. Supported by an extensive R&D program and testing conducted in collaboration with RINA, results demonstrate high resistance to hydrogen-induced cracking across key pipe grades. Complementing these capabilities, Corinth Pipeworks operates a state-of-the-art hydrogen testing laboratory, one of the first globally for a pipe manufacturer, enabling material testing in pure or blended hydrogen under high-pressure conditions, and reinforcing its leading role in advancing safe and reliable hydrogen infrastructure.

### Sour service

The development of new fields and reserves in harsh environments worldwide is needed in order to reach new energy resources. Sour service pipelines transporting gas having high concentration of H<sub>2</sub>S need advanced properties to withstand hydrogen induced cracking (HIC) and Sulfide Stress Corrosion Cracking (SSCC).

Our experienced technical team, our cooperation in the development of steel grades with top steel suppliers, state of the art equipment and our in-house HIC laboratory facilities guarantee top performance in the realization of such highly demanding projects.

# Offshore pipelines

All around the world new pipeline projects are being developed offshore, often in very harsh environments involving very low temperatures, sour conditions, or deepwater where pipes require improved collapse resistance.

We have specifically developed our range of welded linepipe products to satisfy just such onerous conditions and now have a strong track record of supply for a range of subsea applications including linepipe for subsea-tie backs to existing facilities installed by the reel-lay method, and major export pipelines for new field developments installed by S or J lay.

Our range of pipe coatings is also tailored to offshore applications, including anti-corrosion coatings such as three layer polypropylene or polyethylene which also offer physical protection, high performance fusion bonded epoxy coatings, epoxy lining for flow assurance, and concrete coating where needed for negative buoyancy.

Manufacturing of high quality welded pipes and pipe coating is just part of Corinth Pipeworks' capability which also includes a number of unique value adding proposals such as 24m pipe joint capability significantly reducing time and cost for on-site or lay-barge welding and field joint coating.

Class leading dimensional tolerances coupled with advanced measuring systems developed in close cooperation with end-users and installation contractors offers a detailed report on of every pipe's dimensional characteristics to give a clear advantage with reduced sorting or manipulation during offshore installation.

We make a difference to offshore projects all around the world.

“Ultra long lengths and tight dimensional characteristics are offering **reduced project installation costs** and improve fit up times.”

"Finding new energy resources is a way of securing sustainable access to energy for everyone."

## OCTG, Conductors & Casing pipes

Corinth Pipeworks offers a wide range of high quality Casing & Conductor pipes, for use in all types of oil and gas drilling and well completion activities for both onshore and offshore exploration and production.

CPW's core range in casing pipes is based in the unique capabilities of our 26" HFW mill. Now combined with our 56" LSAW line casing and conductor pipes can be supplied from grades J55 PSL1 API 5CT up to X80M in 20.62mm PSL2 API 5L (HFW) and from API5L GrB up to X70M in 38.1mm PSL2 API 5L (LSAW).

CPW's Thisvi deep water sea port within 1.5km distance from the mill, ensures high operating efficiency, reduced handling costs and improved delivery times.

In order to provide an integrated final product to its customers, CPW also operates a weld on connector facility in collaboration OSI. The annual production capacity reaches 5.000 joints/year.

Product	OD	Production Mill
Tubing	2 3/8" - 7 5/8"	ERW
Casing	8 5/8" - 24"	ERW
Conductor-Casing	24" - 36"	LSAW

“We push the envelope in tube production by offering a **wide range of high quality casing & structural tubes.**”

## Structural tubes

### Hollow Structural Sections

CPW is serving the steel construction market with its extensive range of Structural Pipes and Hollow Structural Sections in Square, Rectangular and Round shapes, used in Architectural, Industrial and Infrastructure applications.

Our Structural Tubes family of products pushes the envelope in steel construction by providing high-strength & fine-grain steels according to EN10219, EN10225, API and ASTM standards, in a wide range of geometries and wall thickness in HFW, HSAW and LSAW production, suitable for very demanding highly-stressed steel structures such as:

- Road and Pedestrian Bridges
- Roofs, Hangars and various Superstructures widely used in airports, stadiums, shopping malls etc.
- Long-span and slender steel structures
- Cranes, booms and masts
- Earth-moving, agricultural & machinery equipment frameworks
- Road, railway-car and trailer frames
- Lighting and traffic-poles, road-sign frameworks
- Jacket foundations for offshore OG & wind power
- Offshore platform top-sides
- Jack-up rig frameworks
- Pile foundations

Our Structural Tube product-range starts from 50mm up to 500mm and 20mm WT in Square and Rectangular shapes and from 2" up to 100" in round shapes. Additionally our Structural tube QC processes builds in our production methods, implements weld-seam heat treatment, on-line Ultrasonic inspection and superior tolerance control.



Square

50x50mm-500x500mm  
max. WT: 25.4mm



Rounds

60.3mm-2,540mm(2"-100")  
max. WT: 52mm



Rectangular

60x40mm-600x400mm  
max. WT: 25.4mm



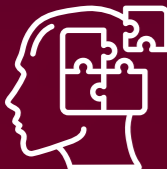
### Governance

- Responsible sourcing
- Whistleblowing mechanism
- Documented Policies



### Social

- Health & Safety Action Plan
- Employee training & development
- Well-being app
- Local communities



### Strategy

- Products enabling energy transition



### Environment

- Energy & Climate change
- Circular economy
- Water & Waste management

# Sustainability strategy

THISVI FACILITY | GR

**Scope 1 & 2 Emissions**

**-50%**  
reduction by 2030  
with base year 2022

**Scope 3 Emissions**

**-25%**  
reduction by 2030  
with base year 2022

**RES Electricity**

**80%\*** 2025  
**100%** 2030

**Responsible Sourcing Initiative**



Corinth Pipeworks continued the implementation of the Responsible Sourcing initiative aimed at assessing and engaging key suppliers based on their sustainability performance, engaging more business partners in responsible practices each year. Corinth Pipeworks participated in the assessment and received a silver medal for its performance in 2025.

**Ratings**

**CDP - TCFD**

**CDP**  
Corinth Pipeworks disclosed its environmental performance through CDP in 2025, achieving a B rating for Climate Change disclosures and a B rating for Water disclosures.

**Environmental Product Declaration**



We utilize Environmental Product Declarations (EPDs) to assess and communicate the environmental impact of our products based on LCA, ensuring transparency and accurate information.

**Digital Sustainability Dashboard**



Digitalizing to create value in Sustainability.

\* Target achieved (>80%)  
This milestone was supported by the development of a 7.1 MW photovoltaic system—the largest rooftop solar installation in Greece, which is expected to supply approximately 20% of the company's electricity demand and avoid around 4,000 tCO<sub>2</sub>e annually, significantly reducing Scope 2 emissions. Overall, the combined use of RES procurement and on-site PV self-generation has been instrumental in achieving this result.

# Thank you



Member of CENERGY HOLDINGS

**Corporate Headquarters:**

33, Amarousiou - Halandriou Str., 151  
25 Marousi, Athens, Greece  
Tel.: (+30)-210-6787111  
Fax: (+30)-210-6787520

**Production facilities:**

Corinth Pipeworks UK Ltd  
Brenda Road  
Hartlepool, TS25 2EF  
United Kingdom

Corinth Pipeworks:  
VI.PE. Thisvis  
320 10 Domvrena, Viotia  
Greece



[info@cpw.gr](mailto:info@cpw.gr)

